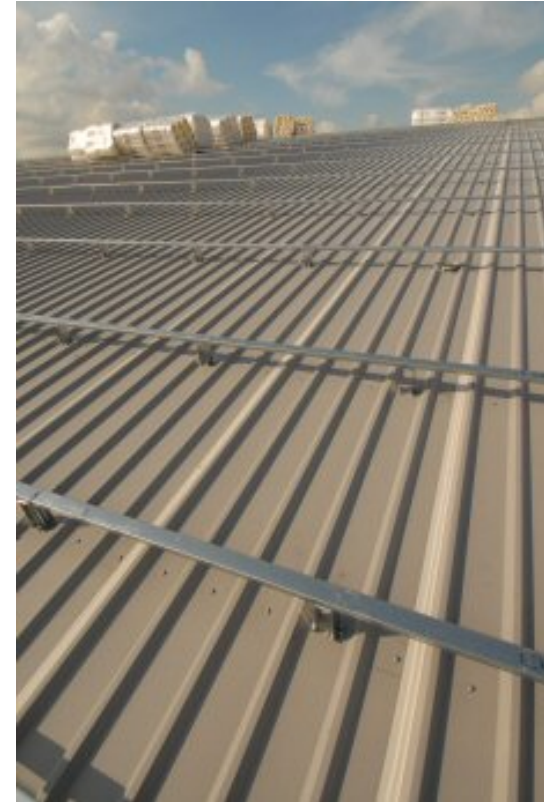




# Understanding Spacer Bar Systems



By **Jim Patterson**  
Euroclad Group Technical Manager





- A spacer bar system is used to create a cavity in which insulation can be located
  - It must also support the outer sheet and transmit the external loads to the structural members.
  - The spacer system is crucial to the thermal efficiency and stability of the roof, or wall system.
-



- The original method of creating a space in a twin skin roofing system was through the use of a “Z” spacer.
  - “Z” spacers were only required to be relatively small (60mm) and the thermal bridging was ignored.
  - Through changes in the Building Regulations, it was required that roofs and walls become more thermally efficient.
-



- In other words, there was an increase in the “U” value requirement for the building.
  - The thermal bridging effect was also required to be taken into account.
  - This meant that the cavities needed to be larger.
  - So the spacer systems needed to become deeper and more thermally efficient.
-

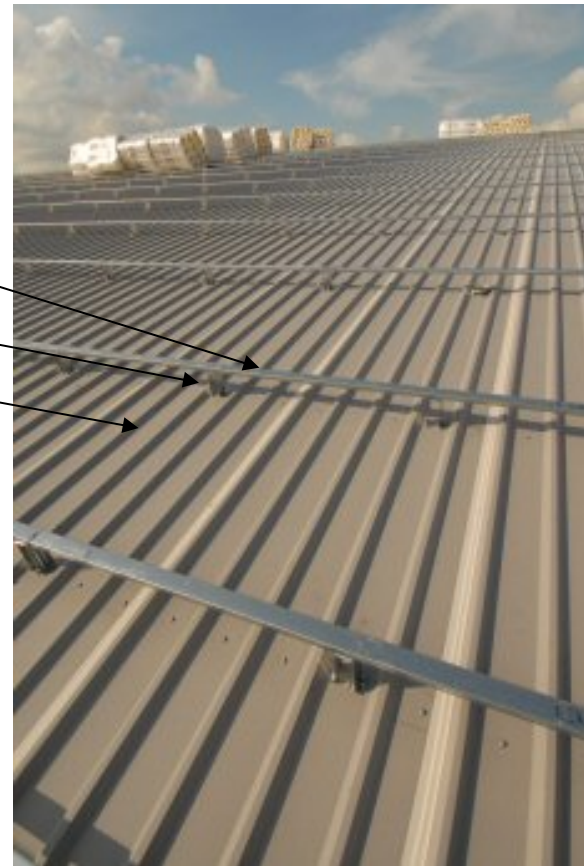
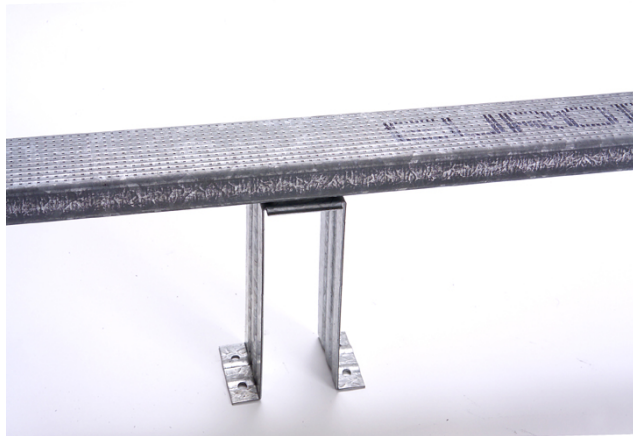


- However, the “Z” spacer system was soon outmoded and new spacer systems were introduced, such as “rail and bracket” systems.
  - One to the first such systems was the Ashgrid, which Euroclad sold for many years.
  - Eurobar is a direct equivalent to Ashgrid.
-



## Spacer Bar System Use

- Spacer Bar System
- Bracket
- Liner Sheet [Sealed]





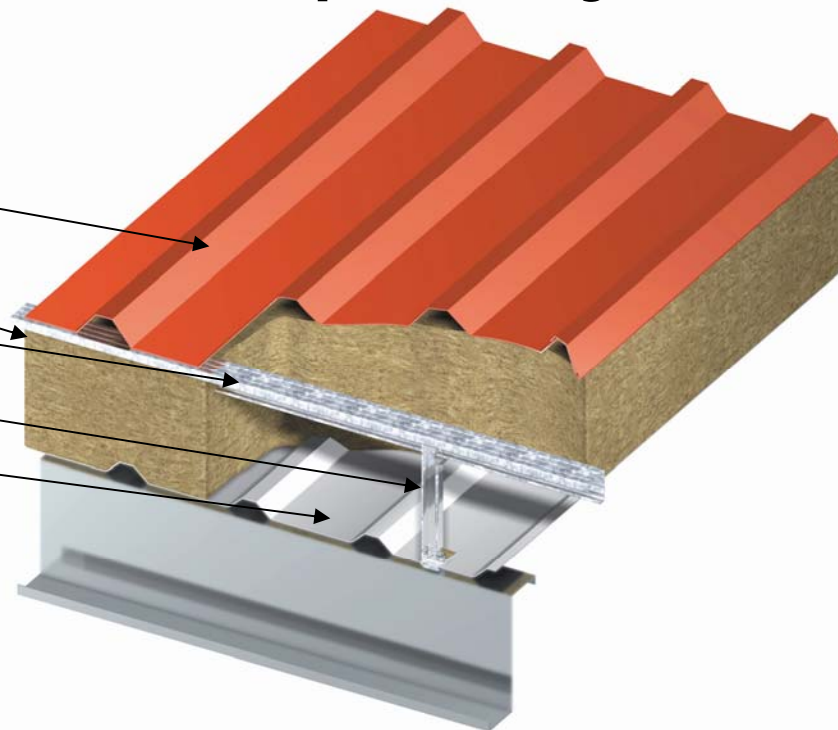
## How do they work?

- They have **2** components.
    - A bar (or rail)
    - A bracket
  - The bars are attached to the brackets.
  - The brackets are attached, through the liner, to the supporting structure.
  - **Different bracket heights are available to suit the required U-value.**
-



## Typical Use Of Eurobar Spacer System

- Outer Sheet
- Insulation
- Bar System
- Bracket
- Liner Sheet [Sealed]





## Eurobar System Overview [1]

- A light weight rail and bracket system.
  - Easy to install.
  - Adds strength and stability to the roof system.
  - Easy to replace and repair.
  - Durable.
  - Installing self-drill fixings is straightforward.
-



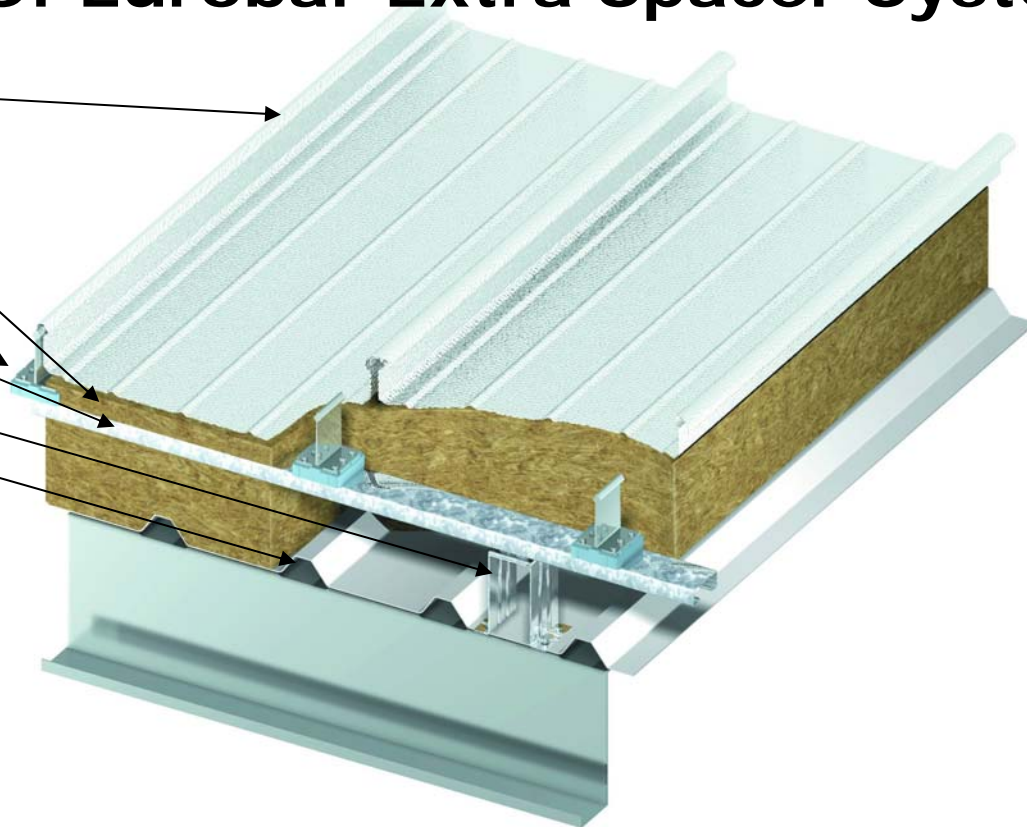
## Eurobar System Overview [2]

- Varying the bracket heights allows a range of U-values to be achieved.
  - Can be used as a component in a certificated **Euroclad firewall**.
  - Good technical support and documentation.
  - Galvanised and high quality rolled and pressed steel product.
  - Bar lengths of **1m**, **2m** and **3m** available.
-



## Typical Use Of Eurobar Extra Spacer System

- Outer Sheet
- Insulation
- Halter
- Bar System
- Bracket
- Liner Sheet [Sealed]





## **Eurobar Extra System Overview [1]**

- A robust rail and bracket system.
  - Easy to install.
  - Adds enhanced strength and stability to the roof system.
  - Easy to replace and repair.
  - Durable.
  - Installing self-drill fixings is straightforward.
-



## Eurobar Extra System Overview [2]

- Specific bracket heights allow a range of U-values to be achieved.
  - Can be used as a component in a certificated **Euroclad firewall** (vertical and horizontal).
  - Good technical support and documentation, with loading software offered.
  - Galvanised and high quality rolled and pressed steel product.
  - Bar lengths of **1.2m**, **2.4m** and **3.6m** available.
-



## **Eurobar or Eurobar Extra System?**

### **Eurobar, or Eurobar Extra – Why?**

- Eurobar is a strong and stable system up to a certain bracket depth.
- Eurobar Extra is stronger and more stable and able to incorporate much greater bracket depths.

### **Why is a greater bracket depth important?**

- The Building Regulations are changing.
  - Much better U-values will be required, to meet reduced energy usage requirements.
-